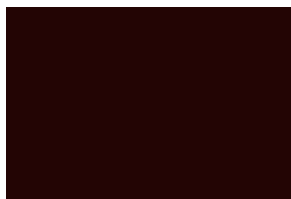


2013 Ford Escape



Go Further

2013 Ford Escape | EXTERIOR COLORS



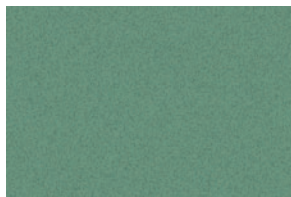
Kodiak Brown Metallic* J1



Deep Impact Blue Metallic* J4



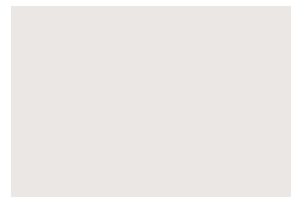
Ginger Ale Metallic* JY



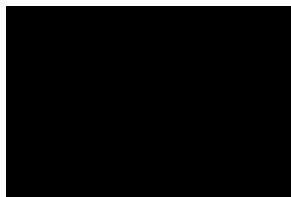
Frosted Glass Metallic* P9



Ruby Red Metallic Tinted Clearcoat**,** RR



White Platinum Metallic Tri-coat**,** UG



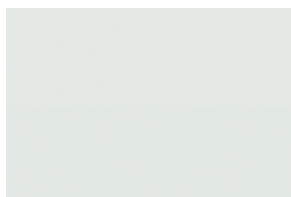
Tuxedo Black Metallic UH



Sterling Gray Metallic UJ



Ingot Silver Metallic UX



Oxford White YZ

Color availability varies by model.
*New for 2013 model year.
**Additional cost.



S



SE



SEL

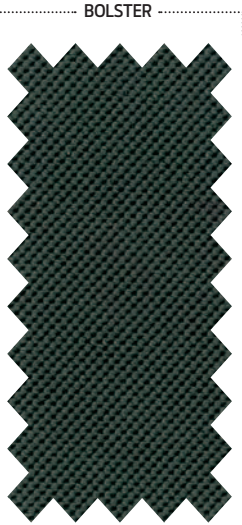


Titanium

	Interior	Seating Surfaces	Door Trim Insert	Headliner	Floor Covering	Instrument Panel Upper/Lower	Steering Wheel	Interior Accent Trim	Safety Belts
S Cloth	Charcoal Black	Charcoal Black/ Sterling Stone	Charcoal Black	Marble	Charcoal Black	Charcoal Black	Ebony	Pegasus	Black
SE Cloth	Charcoal Black	Sterling Stone/ Charcoal Black	Sterling Stone	Marble	Charcoal Black	Charcoal Black	Ebony	Phoenix Silver	Black
	Medium Light Stone	Medium Light Stone/ Medium Dark Stone	Medium Light Stone	Marble	Medium Stone	Charcoal Black/ Medium Light Stone	Ebony	Phoenix Silver	Medium Light Stone
SEL Leather Trim	Charcoal Black	Charcoal Black	Charcoal Black	Marble	Charcoal Black	Charcoal Black	Ebony	Mica	Black
	Medium Light Stone	Medium Light Stone	Medium Light Stone	Marble	Medium Stone	Charcoal Black/ Medium Light Stone	Ebony	Mica	Medium Light Stone
Titanium Partial Leather or Full Leather Trim	Charcoal Black	Charcoal Black	Charcoal Black	Marble	Charcoal Black	Charcoal Black	Ebony	Midnight Symphony	Black



Escape S – Charcoal Black
Cloth front bucket seats



7B



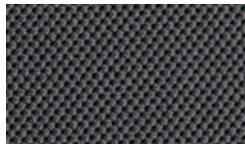
Escape SEL – Medium Light Stone
Leather-trimmed front bucket seats

8L

ALSO AVAILABLE IN:



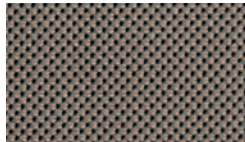
Escape SE – Charcoal Black



7B



Escape SE – Medium Light Stone



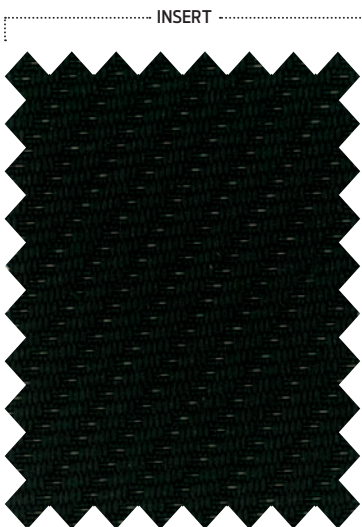
7L

ALSO AVAILABLE IN:



Escape SEL/Titanium – Charcoal Black

8B



Escape Titanium – Charcoal Black
Partial leather-trimmed front bucket seats



DB



Exterior Colors		INTERIOR/SEAT COLORS						
		S	SE		SEL		Titanium	
		Cloth	Cloth		Leather		Partial Leather	Leather
		Charcoal Black 7B	Medium Light Stone 7L	Charcoal Black 7B	Medium Light Stone 8L	Charcoal Black 8B	Charcoal Black DB	Charcoal Black 8B
Kodiak Brown Metallic*	J1
Deep Impact Blue Metallic*	J4
Ginger Ale Metallic*	JY
Frosted Glass Metallic*	P9
Ruby Red Metallic Tinted Clearcoat**,**	RR	
White Platinum Metallic Tri-coat**,**	UG	
Tuxedo Black Metallic	UH
Sterling Gray Metallic	UJ
Ingot Silver Metallic	UX
Oxford White	YZ	.	.	.				

*New for 2013 model year.

**Additional cost.



17" steel with Sparkle Silver cover
Standard on S



17" Sparkle Silver-painted alloy
Standard on SE



18" Sparkle Nickel-painted alloy
Standard on SEL



18" alloy with bright PVD finish
Optional on SEL
64L



18" polished alloy
Optional on SE (late availability)



19" Luster Nickel-painted alloy
Standard on Titanium