



2015
EDGE



Go Further

SPECIFICATIONS



Intelligently
reimagined.



Click to see more of
the all-new Edge.

Titanium. Bronze Fire Tinted Clearcoat Metallic. Available equipment.

2015 **EDGE**
ford.com



Edge Specifications



Engines/EPA-Estimated Ratings & Dimensions

2.0L EcoBoost®

245 hp @ 5,500 rpm ¹
275 lb.-ft. of torque @ 3,000 rpm
6-speed SelectShift® automatic
FWD 20 city/30 hwy/24 combined mpg
AWD 20 city/28 hwy/23 combined mpg

2.0L EcoBoost with Auto Start-Stop

245 hp @ 5,500 rpm ¹
275 lb.-ft. of torque @ 3,000 rpm
6-speed SelectShift automatic
FWD 21 city/30 hwy/24 combined mpg

3.5L Ti-VCT V6

280 hp @ 6,500 rpm
250 lb.-ft. of torque @ 4,000 rpm
6-speed SelectShift automatic
FWD 18 city/26 hwy/21 combined mpg
AWD 17 city/25 hwy/20 combined mpg

2.7L EcoBoost V6

315 hp @ 4,750 rpm ¹
350 lb.-ft. of torque @ 2,750 rpm
6-speed SelectShift automatic
FWD 18 city/27 hwy/21 combined mpg
AWD 17 city/24 hwy/20 combined mpg

Exterior

Wheelbase	112.2"
Length	188.1"
Height	68.6"
Width – Excluding mirrors	75.9"
Width – Including mirrors	85.8"
Width – Mirrors folded	78.4"
Liftover height	29.7"

Interior

	Front/Rear
Head room	40.2"/40.3"
Shoulder room	60.3"/60.5"
Hip room	55.9"/57.5"
Leg room	42.6" (max.)/40.6"

Capacities (cu. ft.)

Passenger volume	113.9
Cargo volume behind front seats	73.4
Cargo volume behind rear seats	39.2
Fuel tank (gal.)	
FWD/AWD	18.0

Standard Features

Mechanical

6-speed SelectShift automatic transmission with paddle activation
4-wheel independent suspension
Electric power-assisted steering
Front-wheel drive (FWD)
Hill start assist
Power disc brakes with Anti-Lock Brake System (ABS)
Torque Vectoring Control

Seating

Front bucket seats with 4-way adjustable head restraints
Rear 60/40 split fold-flat seat with manually reclining seat backs and folding center armrest with 2 cupholders

Interior

12-volt powerpoints (2 in 1st row, 1 in 2nd row and 1 in rear cargo area)
Adjustable driver and front-passenger sun visors with illuminated vanity mirrors
Air conditioning with rear-seat vents
Below-floor Cargo Management System
Cargo area tie-downs and hooks
Cargo net
Center console with storage tray, armrest, powerpoint and 2 cupholders
Coat hooks (2)
Compass and outside temperature displays
Cupholders/beverage holders (8)
Front-passenger (1) and B-pillar (2) assist handles
Leather-wrapped shift knob
Manual tilt/telescoping steering column
Map pockets in driver and front-passenger seat backs
Overhead console with sunglasses holder
Power door locks
Power windows with one-touch-up/-down feature for driver and front-passenger windows
Push-button start
Rear-window defroster
Steering wheel-mounted cruise, audio and 5-way MyFord® controls (2)

Exterior

Automatic headlamps with wiper activation
Body-color rear spoiler
Configurable LED daytime running lamps
Dual bright exhaust tips
Easy Fuel® capless fuel filler
LED taillamps
Power sideview mirrors with integrated blind spot mirrors and manual fold-away design
Privacy glass (rear doors, rear quarter windows and liftgate window)
Quad-beam halogen headlamps
Windshield wipers – Front: speed-sensitive, variable-intermittent with washer; rear: 2-speed with washer

Safety & Security

Personal Safety System™ for driver and front passenger includes dual-stage front airbags, ² safety belt pretensioners, safety belt energy-management retractors, safety belt usage sensors, driver's seat position sensor, crash severity sensor, restraint control module and Front-Passenger Sensing System
Active Knee-Airbag ² Glovebox
AdvanceTrac® with RSC® (Roll Stability Control™) and Curve Control
Battery saver with headlamps-off delay
Belt-Minder® front safety belt reminder
Child-safety rear door locks
Driver's knee airbag ²
Front height-adjustable shoulder safety belts
Front-seat side airbags ²
LATCH – Lower Anchors and Tether Anchors for Children (2 in rear outboard seating positions)
MyKey®
Rear view camera
Safety Canopy® System with side-curtain airbags ² and rollover sensor
SecuriLock® Passive Anti-Theft System
SOS Post-Crash Alert System™
Tire Pressure Monitoring System (excludes spare)

Dimensions may vary by trim level.

¹Using 93-octane fuel. ²Always wear your safety belt and secure children in the rear seat.

2015 **EDGE**
ford.com





SEL. Guard. Available equipment.

SEL. Dune leather trim.¹ Rear 60/40 split seat with reclining seat backs. Available equipment.

SEL. 73.4-cu.-ft. rear cargo area. Available equipment.

SE

Equipment Group 100A
Includes all standard features, plus:

Mechanical

2.0L EcoBoost® engine with Active Grille Shutters

Seating

6-way manual driver's seat

4-way manual front-passenger seat

Cloth seats

Interior

AM/FM stereo/single-CD player with MP3 capability and 6 speakers

Ford SYNC® enhanced voice-activated, in-vehicle connectivity system with 4.2" color LCD screen in center stack, AppLink™, 911 Assist®, and media hub with audio input jack and smart-charging USB port

Dark Ano Gray instrument panel appliqué

Dark Slate Metallic center stack finish

Front and rear carpeted floor mats

Exterior

18" Sparkle Silver-painted aluminum wheels with P245/60R18 all-season BSW tires

Black sideview mirrors

Body-color door handles

Bright grille

Remote Keyless Entry System

Available Options & Package

2.0L EcoBoost engine with Auto Start-Stop (FWD only)

3.5L Ti-VCT V6 engine

2nd-row outboard inflatable safety belts

All-wheel drive (AWD)

Black roof-rack side rails

Cargo Accessories Package includes cargo area cover, cargo area protector and rear bumper protector

Dual Headrest DVD by INVISION™² (late availability)

Front and rear all-weather floor mats

P235/60R18 all-season snow chain-compatible tires

SEL

Equipment Group 200A
Includes select SE features, plus:

Seating

10-way power driver's seat

EasyFold® rear seat back release

Unique cloth seats

Interior

Auto-dimming rearview mirror

Dual-zone electronic automatic temperature control

Intelligent Access with push-button start

Leather-wrapped steering wheel

Pewter-appearance instrument panel appliqué

Satin Twilight accents

SiriusXM® Satellite Radio with 6-month trial subscription

Exterior

18" Sparkle Silver-painted split-spoke aluminum wheels with P245/60R18 all-season BSW tires

Body-color, heated sideview mirrors with security approach lamps and integrated LED turn signal indicators

Bright beltline moldings

LED signature lamps

Reverse Sensing System

SecuriCode™ invisible keypad

Available Equipment Group

Equipment Group 201A – SYNC with MyFord Touch® voice-activated, in-vehicle connectivity system, which includes 8" color LCD touch screen in center stack; two 4.2" configurable color LCD screens in instrument cluster; media hub with 2 USB ports, SD card reader and audio input jack; and SYNC Services³ + leather-trimmed, heated front seats + 6-way power front-passenger seat + Premium Audio System with 9 speakers

Available Options & Packages

3.5L Ti-VCT V6 engine

18" polished aluminum wheels (requires 201A)

2nd-row outboard inflatable safety belts

All-wheel drive (AWD)

Black roof-rack side rails (n/a with Vista Roof®)

Cargo Accessories Package includes cargo area cover, cargo area protector and rear bumper protector

Class II Trailer Tow Package includes trailer sway control

Dual Headrest DVD by INVISION™² (late availability)

Front and rear all-weather floor mats

P235/60R18 all-season snow chain-compatible tires

Panoramic Vista Roof (requires 201A)

Technology Package includes voice-activated Navigation System with integrated SiriusXM® Traffic and Travel Link® services with 5-year trial subscription, BLIS® (Blind Spot Information System) with cross-traffic alert, Remote Start System, auto-dimming driver's sideview mirror, and 110-volt power outlet (requires 201A)

Utility Package includes foot-activated hands-free power liftgate; perimeter alarm; and universal garage door opener (requires 201A)



18" Sparkle Silver-Painted Aluminum
Standard: SE



18" Sparkle Silver-Painted Split-Spoke Aluminum
Standard: SEL



18" Polished Aluminum
Available: SEL

¹Available feature. ²Ford Licensed Accessory. ³SYNC Services varies by trim level and model year and may require a subscription. Traffic alerts and turn-by-turn directions available in select markets. Message and data rates may apply. Ford Motor Company reserves the right to change or discontinue this product service at any time without prior notification or incurring any future obligation.

Titanium

Equipment Group 300A

Includes select SEL features, plus:

Seating

10-way power driver and front-passenger seats with driver's memory feature

Heated front sport-style bucket seats

Leather-trimmed seats

Interior

Audio System from Sony® with 12 speakers and HD Radio™ Technology

SYNC® with MyFord Touch® voice-activated, in-vehicle connectivity system, which includes 8" color LCD touch screen in center stack; two 4.2" configurable color LCD screens in instrument cluster; media hub with 2 USB ports, SD card reader and audio input jack; and SYNC Services¹

Ambient lighting

Illuminated front door-sill scuff plates

Mechanical Stripe aluminum instrument panel appliqué

Metal-plated accents

Universal garage door opener

Exterior

19" Luster Nickel-painted aluminum wheels with P245/55R19 all-season BSW tires

Body-color door handles with bright inserts

Body-color, heated sideview mirrors with integrated LED turn signal indicators, security approach lamps and memory feature

Foot-activated hands-free power liftgate

LED taillamps with light bar

Perimeter alarm

Available Equipment Groups

Equipment Group 301A – Technology Package

includes voice-activated Navigation System with integrated SiriusXM® Traffic and Travel Link® services with 5-year trial subscription, BLIS® (Blind Spot Information System) with cross-traffic alert, Remote Start System, auto-dimming driver's sideview mirror, and 110-volt power outlet + heated steering wheel + heated and cooled front seats + heated rear outboard seats + panoramic Vista Roof®

Equipment Group 302A – Includes all content of 301A + Lane-Keeping System + enhanced active park assist with side parking sensors + front 180° camera with washer + HID headlamps with auto high beams + rain-sensing windshield wipers + 2nd-row outboard inflatable safety belts

Available Options & Packages

3.5L Ti-VCT V6 engine

20" polished aluminum wheels with Dark Stainless-painted pockets

2nd-row outboard inflatable safety belts (included on 302A)

All-wheel drive (AWD)

Cargo Accessories Package includes cargo area cover, cargo area protector and rear bumper protector

Class II Trailer Tow Package includes trailer sway control

Driver's Assistance Package includes adaptive cruise control and collision warning with brake support, and power-tilt/-telescoping steering column (requires 301A or 302A)

Dual Headrest DVD by INVISION™² (late availability)

Front and rear all-weather floor mats

P235/60R18 all-season snow chain-compatible tires (requires and only available with 18" polished aluminum wheels)

Panoramic Vista Roof (included on 301A and 302A)

Silver roof-rack side rails (300A only; n/a with Vista Roof)

Technology Package includes voice-activated Navigation System with integrated SiriusXM Traffic® and Travel Link® services with 5-year trial subscription, BLIS® (Blind Spot Information System) with cross-traffic alert, Remote Start System, auto-dimming driver's sideview mirror, and 110-volt power outlet (included on 301A and 302A)



Bronze Fire Tinted Clearcoat Metallic. Available equipment.

2nd-row outboard inflatable safety belts.³ Ceramic leather trim. Available equipment.

HID headlamps with auto high beams.³

Heated and cooled front seats.³

LED taillamps with light bar.



18" Polished Aluminum
Available (requires
snow chain-compatible tires)



19" Luster Nickel-Painted
Aluminum
Standard



20" Polished Aluminum with
Dark Stainless-Painted Pockets
Available

¹SYNC Services varies by trim level and model year and may require a subscription. Traffic alerts and turn-by-turn directions available in select markets. Message and data rates may apply. Ford Motor Company reserves the right to change or discontinue this product service at any time without prior notification or incurring any future obligation. ²Ford Licensed Accessory. ³Available feature.



Electric Spice. Available equipment.

Aluminum brake and accelerator pedal covers.

2.7L EcoBoost V6, twin-turbocharged, direct-injection engine.

Trapezoidal fascia-integrated dual bright exhaust outlets.



20" Polished Aluminum with Low-Gloss Magnetic-Painted Pockets
Standard



21" Premium Tarnished Dark-Painted Aluminum
Available

Sport

Equipment Group 400A

Includes select SEL features, plus:

Mechanical

2.7L EcoBoost® V6 engine with Active Grille Shutters

Sport-tuned suspension

Seating

10-way power, heated driver and front-passenger seats with driver's memory feature

Leather-trimmed seats with sueded perforated inserts

Interior

Audio System from Sony® with 12 speakers and HD Radio™ Technology

SYNC® with MyFord Touch® voice-activated, in-vehicle connectivity system, which includes 8" color LCD touch screen in center stack; two 4.2" configurable color LCD screens in instrument cluster; media hub with 2 USB ports, SD card reader and audio input jack; and SYNC Services¹

Aluminum brake and accelerator pedal covers

Ambient lighting

Brush weave aluminum instrument panel appliqué

Deluxe front and rear carpeted floor mats

Illuminated front door-sill scuff plates

Metal-plated accents

Universal garage door opener

Exterior

20" polished aluminum wheels with low-gloss Magnetic-painted pockets and P245/50R20 all-season BSW tires

Black beltline moldings

Body-color cladding

Body-color front and rear bumpers

Body-color, heated sideview mirrors with integrated LED turn signal indicators, security approach lamps and memory feature

Dual bright exhaust outlets integrated into rear trapezoidal fascia

LED taillamps with light bar

Perimeter alarm

Piano Black grille with Magnetic accents

Unique body-color front and rear lower fascias

Unique headlamp treatment

Available Equipment Group

Equipment Group 401A – Technology Package

includes voice-activated Navigation System with integrated SiriusXM® Traffic and Travel Link® services with 5-year trial subscription, BLIS® (Blind Spot Information System) with cross-traffic alert, Remote Start System, auto-dimming driver's sideview mirror, and 110-volt power outlet + Lane-Keeping System + enhanced active park assist with side parking sensors + front 180° camera with washer + HID headlamps with auto high beams + rain-sensing windshield wipers + foot-activated hands-free power liftgate + heated and cooled front seats + heated rear outboard seats

Available Options & Packages

21" premium Tarnished Dark-painted aluminum wheels

2nd-row outboard inflatable safety belts

All-wheel drive (AWD)

BLIS (Blind Spot Information System) with cross-traffic alert (includes auto-dimming driver's sideview mirror; included on 401A)

Cargo Accessories Package includes cargo area cover, cargo area protector and rear bumper protector

Driver's Assistance Package includes adaptive cruise control and collision warning with brake support, and power-tilt/-telescoping steering column (requires 401A)

Dual Headrest DVD by INVISION™² (late availability)

Front and rear all-weather floor mats

Panoramic Vista Roof®

Summer-only performance tires³ (requires 21" wheels)

Voice-activated Navigation System with integrated SiriusXM Traffic and Travel Link services with 5-year trial subscription (included on 401A)

¹SYNC Services varies by trim level and model year and may require a subscription. Traffic alerts and turn-by-turn directions available in select markets. Message and data rates may apply. Ford Motor Company reserves the right to change or discontinue this product service at any time without prior notification or incurring any future obligation. ²Ford Licensed Accessory. ³Ford does not recommend using summer tires when temperatures drop to approximately 40°F or below (depending on tire wear and environmental conditions) or in snow/ice conditions. If the vehicle must be driven in these conditions, Ford recommends using all-season or winter tires.

Exteriors



White Platinum Tri-coat Metallic



Oxford White



Ingot Silver



Ruby Red Tinted Clearcoat Metallic



Bronze Fire Tinted Clearcoat Metallic



Deep Impact Blue



Electric Spice



Magnetic



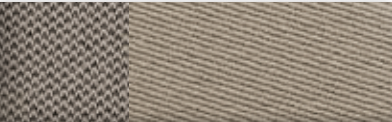
Guard



Tuxedo Black

¹Additional charge.
Colors are representative only. See your dealer for actual paint/trim options.

Interiors



1 Dune Cloth



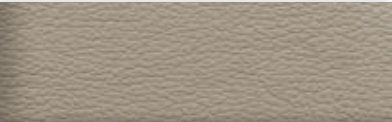
2 Ebony Cloth



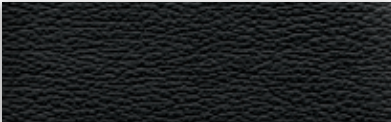
3 Unique Dune Cloth



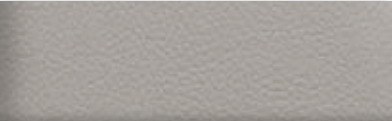
4 Unique Ebony Cloth



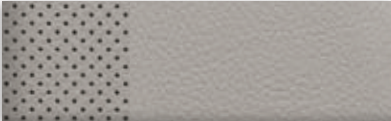
5 Dune Leather



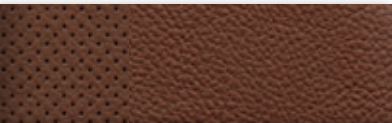
6 Ebony Leather



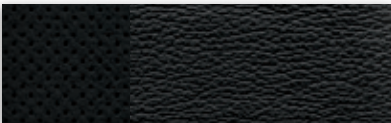
7 Ceramic Leather



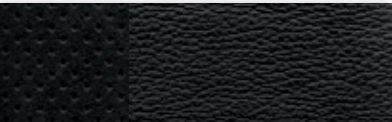
8 Ceramic Leather with Perforated Inserts



9 Cognac Leather with Perforated Inserts



10 Ebony Leather with Perforated Inserts



11 Ebony Leather with Sueded Perforated Inserts

Bring these
colors to life



Exteriors	Interiors										
	SE	SEL				Titanium					Sport
White Platinum Tri-coat Metallic ¹		3	4	5	6	6	7	8	9	10	11
Oxford White	1 2	3	4	5	6						
Ingot Silver	1 2	3	4	5	6	6	7	8	9	10	11
Ruby Red Tinted Clearcoat Metallic ¹		3	4	5	6	6	7	8		10	11
Bronze Fire Tinted Clearcoat Metallic ¹			3	4	5	6	6	7	8	10	11
Deep Impact Blue	1 2		3	4	5	6	6	7	8	10	11
Electric Spice											11
Magnetic	1 2	3	4	5	6	6	7	8	9	10	
Guard	1 2	3	4	5	6	6	7	8	9	10	
Tuxedo Black	1 2	3	4	5	6	6	7	8	9	10	11

5, 6 Requires 201A on SEL 8, 9, 10 Requires 301A or 302A



SE in Magnetic accessorized with smoked side window deflectors, front and rear molded splash guards, keyless entry keypad, roof rails, and roof-mounted crossbars and cargo box by THULE®¹

Remote Access

All-weather floor mats

Dual Headrest DVD by INVISION™¹,²

Cargo area protector, cargo security cover and rear bumper protector

Exterior

Full vehicle covers¹
Hood protector¹
Racks and carriers¹
Splash guards
Sportz® tent¹
Trailer towing accessories
Wheel lock kit

Interior

Ash cup/coin holders
Auto-dimming rearview mirror
Cargo organizers and protectors
Carpeted floor mats
Interior light kit
In-vehicle safe¹
Tablet cradle¹

Electronics

Portable DVD rear-seat entertainment systems by NextBase®¹



FORD ACCESSORIES
accessories.ford.com

¹Ford Licensed Accessory. ²Factory option. See dealer for details.

Learn more about
your Edge



2015
EDGE



Go Further

ford.com

New Vehicle Limited Warranty. We want your Ford Edge ownership experience to be the best it can be. Under this warranty, your new vehicle comes with 3-year/36,000-mile bumper-to-bumper coverage, 5-year/60,000-mile Powertrain Warranty coverage, 5-year/60,000-mile safety restraint coverage, and 5-year/unlimited-mile corrosion (perforation) coverage – all with no deductible. Please ask your Ford Dealer for a copy of this limited warranty.

Roadside Assistance. Covers your vehicle for 5 years or 60,000 miles, so you have the security of knowing that help may be only a phone call away should you run out of fuel, lock yourself out of the vehicle or need towing. Your Ford Dealer can provide complete details on all of these advantages.

Ford Credit. Get the ride you want. Whether you plan to lease or finance, you'll find the choices that are right for you at Ford Credit. Ask your Ford Dealer for details or check us out at fordcredit.com.

Ford Extended Service Plan. For a purchase or lease, the Ford Extended Service Plan (ESP) gives you peace-of-mind protection designed to cover key vehicle components and protect you from the cost of unexpected repairs. Ask your dealer for a Ford ESP, the only service contract backed exclusively by Ford and honored at all Ford Lincoln dealerships.

Insurance Services. Get Ford Motor Company quality in your auto insurance. Our program offers industry-leading benefits and competitive rates. Call 1-877-367-3847, or visit us at fordvip.com for a no-obligation quote. Insurance offered by American Road Services Company (in CA, American Road Insurance Agency), a licensed agency and subsidiary of Ford Motor Company.

Ford Original Accessories will be warranted for whichever provides you the greatest benefit: 24 months/unlimited mileage, or the remainder of your Bumper-to-Bumper 3-year/36,000-mile New Vehicle Limited Warranty. Ford Licensed Accessories (FLA) are warranted by the accessory manufacturer's warranty. FLA are designed and developed by the accessory manufacturer and have not been designed or tested to Ford Motor Company engineering requirements. Contact your Ford Dealer for details and/or a copy of all limited warranties.

Comparisons based on competitive models (class is Midsize Utilities), publicly available information and Ford certification data at time of release. Vehicles may be shown with optional equipment. Features may be offered only in combination with other options or subject to additional ordering requirements/limitations. Dimensions shown may vary due to optional features and/or production variability. Information is provided on an "as is" basis and could include technical, typographical or other errors. Ford makes no warranties, representations, or guarantees of any kind, express or implied, including but not limited to, accuracy, currency, or completeness, the operation of the information, materials, content, availability, and products. Ford reserves the right to change product specifications, pricing and equipment at any time without incurring obligations. Your Ford Dealer is the best source of the most up-to-date information on Ford vehicles.

After trial period expires, SiriusXM Satellite Radio, SiriusXM Traffic and Travel Link subscriptions are sold separately or as a package and are continuous until you call SiriusXM to cancel. See SiriusXM Customer Agreement for complete terms at www.siriusxm.com. SiriusXM Traffic and Travel Link available in select markets. For more information, see www.siriusxm.com/travellink or www.siriusxm.com/traffic. Sirius, XM and all related marks and logos are trademarks of Sirius XM Radio Inc. HD Radio is a proprietary trademark of iBiquity Digital Corp. INVISION is a trademark of VOXX International Corporation. Sony is a registered trademark of the Sony Corporation. THULE is a registered trademark of Thule Sweden AB.

Follow Ford:

